

SQL Diagnostic Manager for SQL Server

FIND AND FIX SQL SERVER PERFORMANCE PROBLEMS

SQL Diagnostic Manager for SQL Server is a powerful solution for performance monitoring, alerting, diagnostics, and reporting for Microsoft SQL Server. It proactively notifies administrators to health, performance, and availability problems.

WHY SQL DIAGNOSTIC MANAGER?

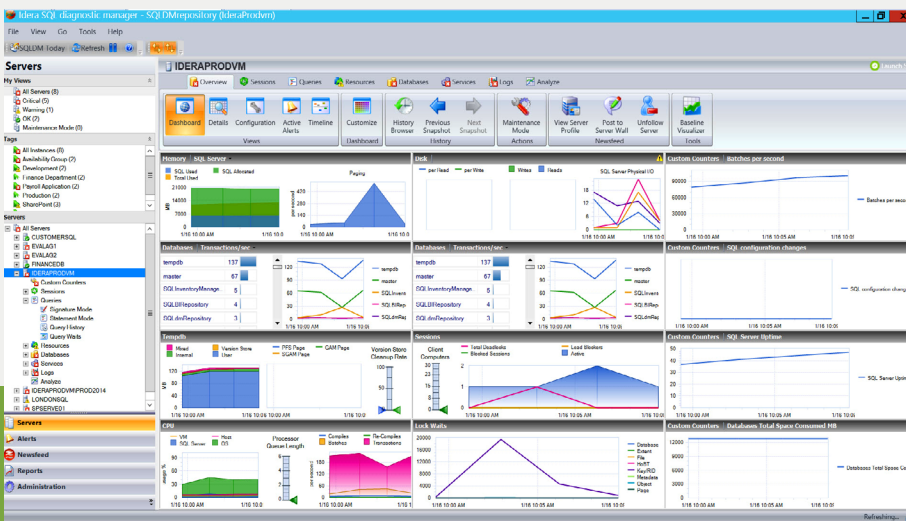
Reduced availability and performance of SQL Server can severely impact the business-critical applications that it supports. Access to reliable, real-time information on the status and health of the complete environment is essential, along with diagnostic tools to quickly pinpoint and resolve performance issues. SQL Diagnostic Manager for SQL Server meets these needs by monitoring the performance of the entire SQL Server environment and providing the most comprehensive diagnostics on the market.

PRODUCT HIGHLIGHTS

- Monitor performance for physical, virtual, and cloud environments
- Monitor queries and query plans to see the causes of blocks and deadlocks
- View expert recommendations to optimize performance
- Alert predictively with settings to avoid false alerts
- View summary of top issues and alerts
- Monitor application transactions and optimize SQL queries

KEY BENEFITS

- Find query bottlenecks via wait state workload analysis
- Alert predictively and avoid false alerts
- View expert recommendations to optimize performance
- Monitor top issues and alerts with central dashboard



Start for FREE!

With **SQL Diagnostic Manager**, we have caught more in-progress events and been able to take action before our clients were impacted.

Patrick Hurst **Senior Database Administrator** at iQmetrix Software Development Corp.
Medium Enterprise in USA Health Care with 1,000 or more SQL Server databases



PERFORMANCE MONITORING

Monitor and analyze continuously Continuously check in real-time the availability, health, and performance of SQL Server instances. Analyze metrics across hundreds of instances.

Manage availability groups Manage the topology of high availability groups. Monitor and alert on clusters, mirrors, and replication to safeguard instances during failover.

Monitor tempdb Identify and resolve contention and performance problems of the tempdb system. Check and display the space and performance information of tempdb.

Customize counters Add custom counters for monitoring and reporting. Include any Windows Performance Monitor counters and any SQL queries for application-specific monitoring.

Manage jobs Monitor and alert on the success, failure, cancellation, and retry of jobs. View all jobs and their last known status, and the complete history of jobs. Also, start and stop jobs.

Monitor operating systems Collect performance metrics at the level of the operating system using Windows Management Instrumentation, and Object Linking & Embedding.

ENTERPRISE MANAGEMENT

See overview and drill down View entire environments in the customizable dashboard and drill down to find the cause of problems. Also, specify multiple dashboards per instance.

Share configurations Export and import configuration files to share customized dashboards, counters, alert templates, and reports with other users across the organization.

Apply granular application security Set up the access to servers and instances via fine-grained security permissions for different groups of people.

Deploy agentless and with low impact Deploy SQL Diagnostic Manager without installing anything on monitored systems. Monitor production systems with low impact and risk.

Report comprehensively Create predefined and customized reports. Report on performance trends and forecasts for capacity planning. Deploy reports to SQL Server Reporting Services.

Deploy for hybrid cloud Deploy SQL Diagnostic Manager to monitor on-premise databases, databases on cloud virtual machines, and managed cloud databases.

DIAGNOSTICS & ANALYTICS

View locks, blocks, and deadlocks Identify real-time and historical session locks, blocks and deadlocks and view the complete blocking chain for easy identification and resolution.

Browse historical data View historical trends and drill down to the precise point-in-time a problem occurred to understand better the multiple factors that may contribute to the problem.

Set up multiple baselines Define and schedule several baseline periods to differentiate various situations. View baseline performance and compare baselines.

Integrate with SCOM Propagate the status, health, and events of monitored instances up to Microsoft's System Center Operations Manager (SCOM) to share data with IT operations.

Run PowerShell scripts Use Microsoft PowerShell scripts to manage SQL Diagnostic Manager. Also, run PowerShell scripts for automatic alert response actions.

Plan capacity View charts and create reports with trends and forecasts of metrics to plan for future capacity needs.

ALERTING

Alert based on best practices Choose from over 100 predefined alert settings based on industry best practices. Modify configuration settings for greater flexibility.

Quickly deploy alerts across instances Add and modify metrics to alerts for multiple servers with the default alert configuration and the copy-to operation.

Alert to different audiences Send alerts to different groups of people based on metrics, time-of-day, instance, and more with advanced notifications.

Alert from baselines Capture baselines of past performance to configure baseline alerts that automatically calibrate to changes to avoid excessive noise and false positives.

Smooth and snooze alerts Prevent recurring alerts while problems are being worked on by snoozing alerts. Delay the first alert by smoothing problematic metrics that occasionally spike.

Automate alert response actions Set up automated alert response actions for system notifications, email, SQL scripts, PowerShell scripts, and more.