

# ER/Studio Business Architect

## CREATE BUSINESS PROCESSES AND CONCEPTUAL MODELS FOR BUSINESS ARCHITECTURE

ER/Studio Business Architect is a business process and conceptual modeling tool that simplifies how business stakeholders and data architects document conceptual models and business processes and how those processes impact enterprise data, to align with business goals and regulatory requirements. Bringing together the simplicity of a drawing tool with the rich semantics of the BPMN 2.0 standard, business users and data professionals can easily model the relationships between people, processes, and data with Business Architect.

### WHY ER/STUDIO BUSINESS ARCHITECT?

The Business Architect tool provides a focused set of features for establishing a business architecture, offering deep functionality for conceptual modeling, business process modeling, and capturing the connections between process and data. Bringing together the simplicity of a drawing tool with the rich semantics of the BPMN 2.0 standard, business users can easily model the relationships between people, processes, and data with Business Architect.

For BPMN 2.0 users, Business Architect includes extensive events, tasks, and gateways for documenting processes, and rich validation capabilities. It also includes the ability to document complex conversations with choreography to provide visibility to touchpoints. Users can publish and view business process models, including BPMN 2.0 objects, in ER/Studio Team Server.

In addition to diagramming capabilities, Business Architect captures metadata associated with business processes. This allows users the capability to model the relationships between business processes and data models, and to export the information into a variety of formats.

With ER/Studio Business Architect, both business and technical users can more effectively collaborate to ensure compliance with internal business standards and external mandatory regulations. Tying together an understanding of business processes, the sensitive data elements they interact with, and the individuals involved is a key element in reaching compliance with government regulations such as Sarbanes-Oxley, HIPAA, or GDPR. Business Architect helps data professionals and business stakeholders communicate better and define a business-driven enterprise architecture.

### PRODUCT HIGHLIGHTS

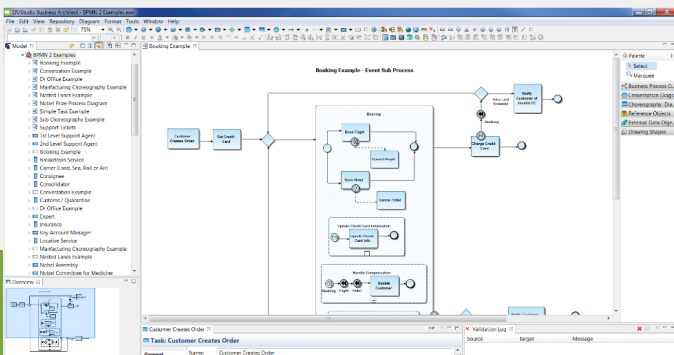
- Design business processes and conceptual models to align with business goals
- Map and model the relationships between people, processes, and data
- Easily export conceptual models to ER/Studio Business Architect to create logical models
- Quickly validate that business process models meet BPMN 2.0 specifications
- Comply with regulatory requirements by identifying sensitive data elements

### KEY BENEFITS

**Develop a business architecture framework** Develop a comprehensive business architecture by defining business processes and activities that identify your organizational goals and the data that must be collected, organized, protected and distributed via people, applications and technology. Improve your organizational efficiency with transparency in your business structure and processes to reduce disconnects between departments and systems. ER/Studio Business Architect provides you the tools to enable your teams to easily define and visualize your business rules, processes, and procedures to establish and define the way they run the business.

**Describe how your organization does business** Document how your company uses data and align your processes to meet business objectives. Create conceptual models to show the high-level visual representation of an organization, and share them with key stakeholders. Map and model the relationships between processes, people and data to provide visibility into the business. ER/Studio Business Architect can access the scalable model repository for sharing business process and conceptual models across the organization.

**Drive the business value of data** Encourage collaboration and break down silos between business and IT stakeholders by publishing conceptual models to Team Server. Align business goals with regulatory requirements to enable a foundation for data governance and improve compliance to audits. Increase visibility of organizational processes and data usage to identify gaps in your processes through BPMN-compliant process modeling.



Start for FREE!

My organization is gaining a lot of value from using **ER/Studio** to produce data models for both the enterprise and individual projects. The tools are easy to use and have very rich functionality. In particular, the support of Barker notation in **Business Architect** is invaluable for us.

- Dean Sumner, Data Architect, **Prudential**



## BUSINESS PROCESS MODELING

**Process Model Creation** Create business process models using elements such as events, tasks, gateways, pools and swim lanes, choreography and conversations

**BPMN 2.0 and 1.x Compliance** Optional automatic validation of process diagrams to ensure compliance with the BPMN specifications

**BPMN 2.0 Validation** Validate your processes based on BPMN 2.0 standards (in real time or as needed)

**Events** Includes all BPMN 2.0 Events – Message, Timer, Error, Escalation, Cancel, Compensation, Conditional, Link, Signal, Terminate, Multiple and Parallel Multiple

**Tasks, Subprocesses, Call Activities** Includes all BPMN 2.0 Activities – Tasks, Loops, Subprocesses, Event Subprocesses, Call Activities, Compensation and Transactions

**Gateways** Includes all BPMN 2.0 Gateways – Exclusive, Inclusive, Parallel, Complex, Event-based, Exclusive Event-based and Parallel Event-based

**Pools and Swim Lanes** Includes horizontal and vertical pools as well as lanes and nested lanes

**Choreography and Messages** Fully functional choreography objects

**Conversation** Fully functional conversation objects

**Data Objects** Includes all BPMN 2.0 data objects – Input, Output, Collection, Input Collection, Output Collection

**Embedded Subprocess Support** Flexibility in diagramming and a workable visual diagram by embedding collapsible subprocesses within a business process

## BUSINESS ARTIFACT MODELING

**External Data Objects** Support for data storage objects to represent databases, entities, tables, views, data storage, data feeds, reports and file systems

**Application** Capture the applications that interact with your business process models

**Business Elements** Capture business terms to enforce naming standards or to build logical models

**Business Rules** Incorporate policies, practices or formulae related to business processes

**Business Units** Incorporate business units such as sales, human resources or accounting into process models

**Stewardship** Support for organizational roles to own specific processes

## CONCEPTUAL MODELING

**Conceptual Model Creation** Support for high-level conceptual modeling using subject areas, business entities, interactions and relationships

**Relationship Traceability** Model links between conceptual or process modeling elements

**Conceptual Model Export** Export conceptual models to ER/Studio Data Architect to create logical models

**Logical Model Import** Import logical data models from Data Architect to extract content for conceptual models

## INTUITIVE USER INTERFACE

**Organizational Hierarchies** Project-based tree hierarchy to group multiple model types and diagrams to align with business initiatives or organizations

**Flexible Interface** Full support for multiple property editors, tab navigation, undo-redo, collapsible nested views and zoom

**Grid Editing** Alternative to hierarchical tree view to display large number of objects or business rules for easy viewing

**Appearance Editing** Ability to update the appearance of your objects (font, size, alignment, colors, etc.) – available per object or as a model preference

**Drawing Shapes** Ability to add additional drawing shapes to your diagrams to assist in visual communication

**Object Alignment** Ability to align your objects, group objects or snap to grid

**Separation of Data and Display** Core data can be manipulated and displayed in a variety of formats, speeding performance and increasing knowledge transfer

**Object Reuse** Process and enterprise objects can be reused across multiple diagrams allowing a single version of truth

**Standards-based Formats** Based on industry standards: Eclipse-based, XML file formats from published Schema, BPMN 2.0 modeling notations

## REPORTING

**Multi-object, Multi-level Impact Analysis Reporting** Show interrelationships between process, data, stewardship, business rule, diagram usage, heritage and connecting objects

**Impact Analysis Report Filtering** Filter reports based on type of relationship, object type, text strings including wildcard matching

**Align Processes with Data** Model to identify what processes create, read, update and delete (CRUD) data objects

**CRUD Reporting** Report processes that affect data and the type of effect

**Usage (CRUD) Report Filtering** Generate reports across object types or filter based on individual object types such as tasks and business processes

## IMPORT/EXPORT/PUBLISH

**Export Across Multiple Formats** Share via compressed workspaces, JPEG diagrams or Web reports which are in HTML and JPEG format

**Export to Data Architect** Save and export conceptual models as .dm1 files for use in Data Architect

**Import Content via Multiple Formats** Import Data Architect .dm1 files, CSV files (for business elements, business entities, business rules, business units, domains, stewards, subject areas, tasks and applications) or compressed workspaces

**Visio Import** Configurable capabilities to import diagrams from Microsoft Visio

**Store and Publish Files** Store files in the shared model Repository and publish them to Team Server for viewing, when working with the Enterprise Team Edition