

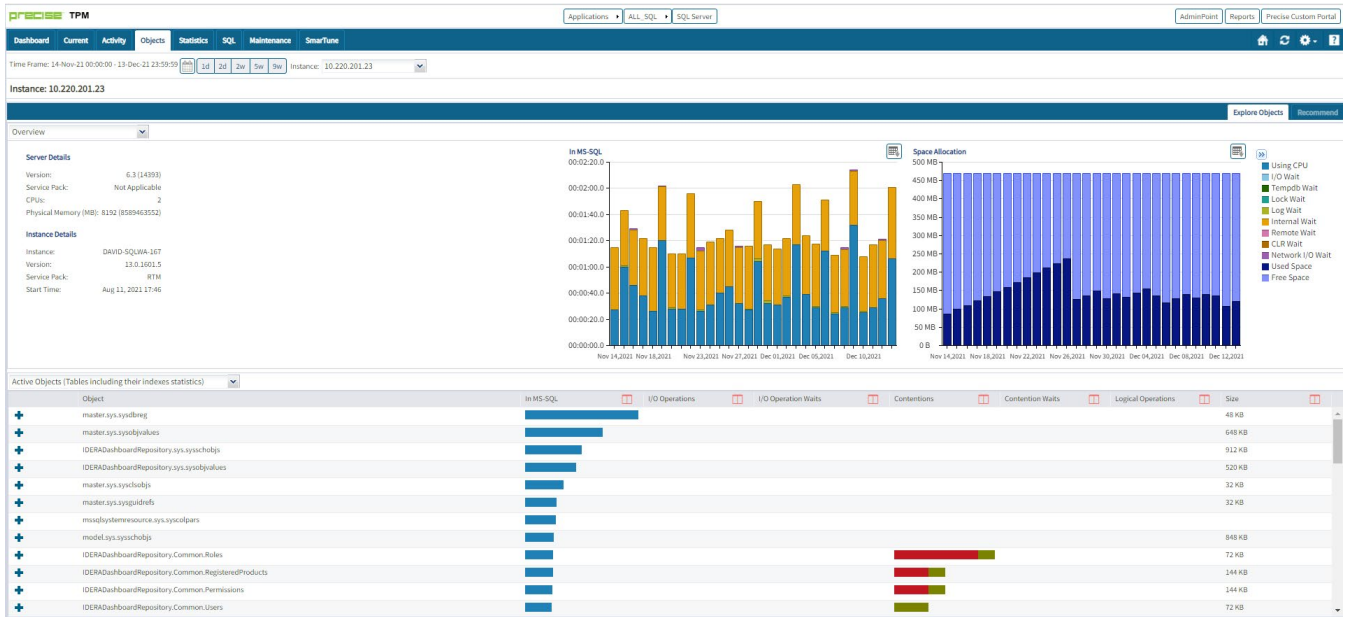
MONITOR HOW YOUR TABLES AND INDEXES PERFORM WITH PRECISE

MONITOR YOUR TABLES AND INDEXES

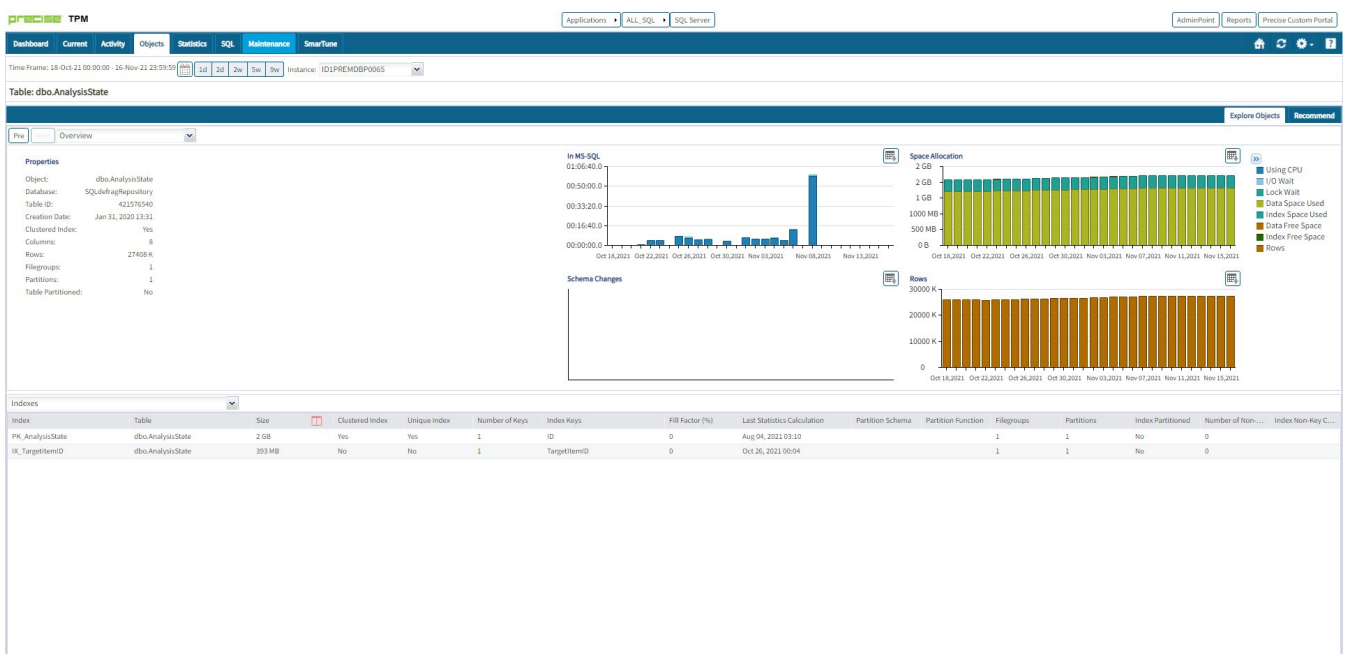
Besides monitoring your SQL queries, programs, and stored procedures, Precise can also monitor how your tables and indexes perform.

Precise can do this in several ways.

If you want to identify which tables are the busiest, you can view the active objects which show the busiest objects in the instance.

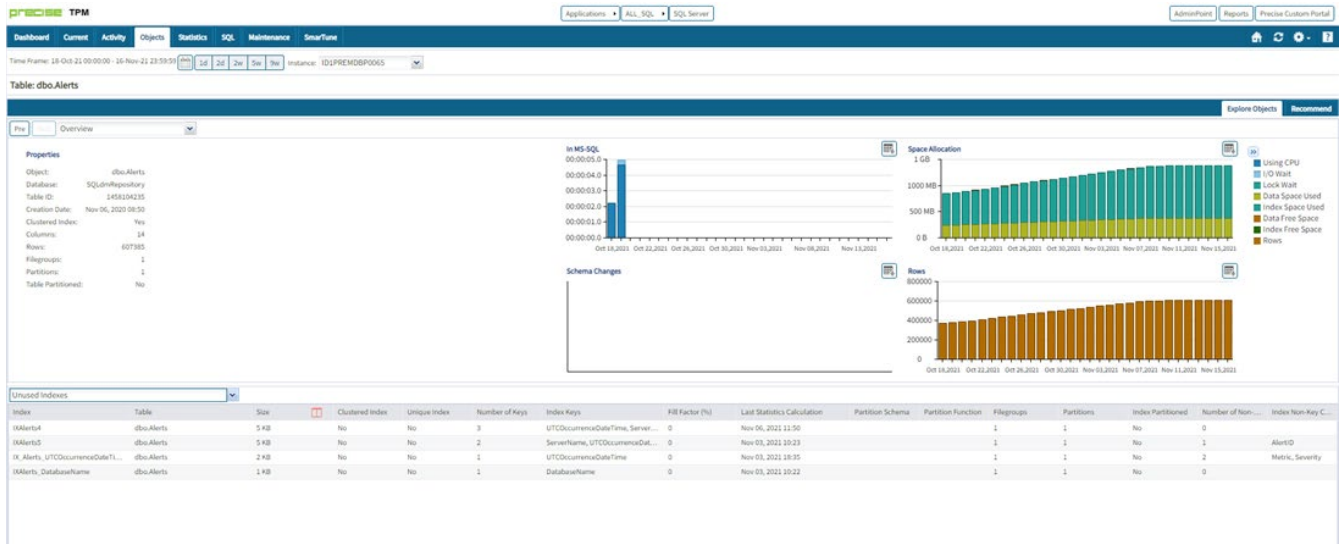


You can choose the busy table and then explore it and understand how that table performs.

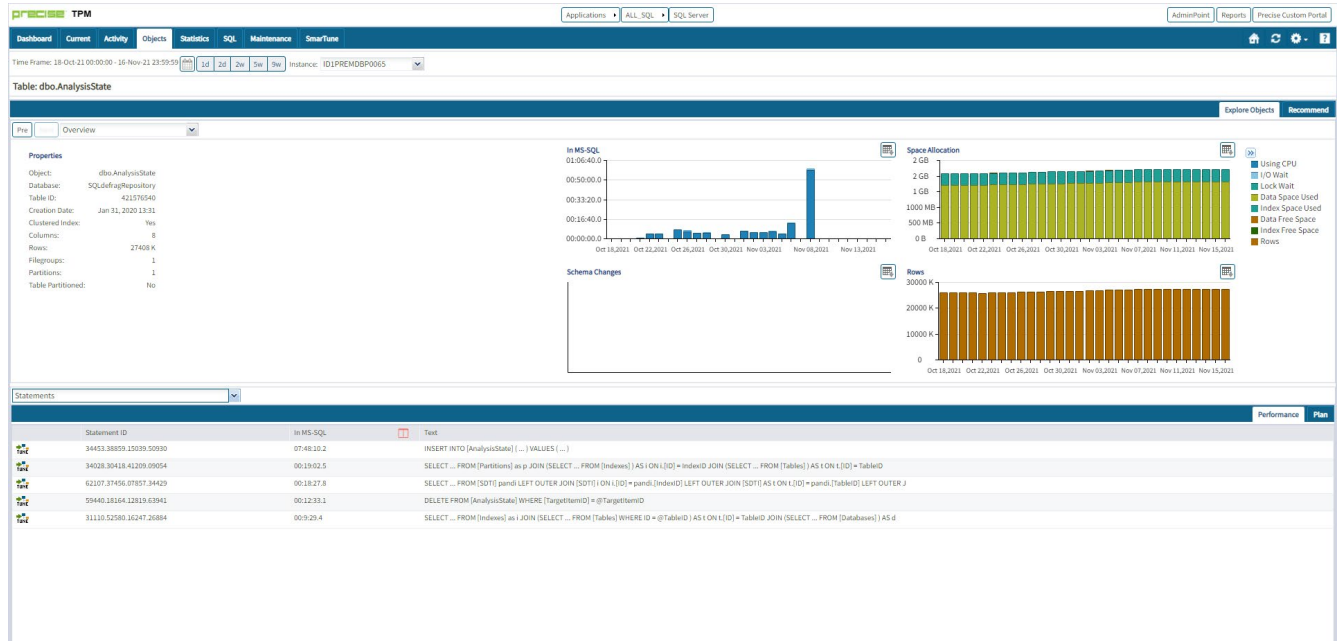


You can display the indexes and columns for that table like other tools.

However, Precise can also show those indexes that are unused. This is very important for index and table maintenance and can reduce the UPDATE, DELETE and INSERT processing times.



Precise can show which statements and stored procedures are executing against the table too and you can see how well they are performing.



By choosing the Recommend tab, Precise will also show recommendations for the table, including new indexes, changes, and statistics.

The screenshot shows the Precise TPM interface for the table 'dbo.AnalysisState'. The 'Recommend' tab is active, showing a list of recommendations on the left and a 'What-if' table on the right. The 'What-if' table has columns for Recommendation, Object, Clustered Index, Unique Index, and Details. Recommendations include Partition Function, Partition Scheme, Drop Index, Create Index, and Create Statistics.

What-if	Recommendation ...	Object	Clustered Index	Unique Index	Details
<input checked="" type="checkbox"/>	Partition Function	pta_pf_4364			LeR:199418425, 1...
<input checked="" type="checkbox"/>	Partition Scheme	pta_ps_8066			PRIMARY, PRIMARY, ...
<input checked="" type="checkbox"/>	Drop Index	[dbo].[AnalysisState]			IX_TargetItemID
<input checked="" type="checkbox"/>	Create Index	[dbo].[AnalysisState]	No	No	TargetItemID ASC, I...
<input checked="" type="checkbox"/>	Create Index	[dbo].[AnalysisState]	No	No	ID ASC
<input checked="" type="checkbox"/>	Create Statistics	[dbo].[AnalysisState]			WhenCounted

Not only does Precise show you the recommendations for the object, but it can evaluate those recommendations using the what-if functionality.

The screenshot shows the Precise TPM interface for the table 'dbo.AnalysisState'. The 'What-if' tab is active, displaying a pie chart titled 'Summary' and a table titled 'Statements that will be affected'. The pie chart shows the distribution of cost changes: Cost Decreased (blue), Cost Increased (red), and No Change in Cost (green). The table shows the impact of various SQL statements on the database.

Statement ID	In MS SQL	% Improvement	Text
34453.38859.15039.50930		-0.00%	INSERT INTO [AnalysisState] ([...]) VALUES (...)
34028.30418.41209.09054		0.01%	SELECT ... FROM [Partitions] as p JOIN (SELECT ... FROM [Indexes]) AS i ON (i.ID = IndexID JO...
62107.37456.07927.34429		17.35%	SELECT ... FROM [SOTI] pairs LEFT OUTER JOIN [SOTI] ON (i.ID) = pairs.[IndexID] LEFT OUT...
59440.18164.12918.63941		-283.06%	DELETE FROM [AnalysisState] WHERE [TargetItemID] = @TargetItemID
31110.52380.16247.26884		0.00%	SELECT ... FROM [Indexes] as i JOIN (SELECT ... FROM [Tables] WHERE ID = @TableID) AS t ON (...)

This informs you whether those index changes will not only benefit one statement but if it improves other queries as well.

With Precise, not only can you monitor how your SQL queries, programs, and stored procedures perform. However, you can also monitor how your tables and indexes perform.

PRECISE

Precise helps database and IT administrators to find and fix database and application performance problems in physical, virtual, and cloud environments. Unlike its competition, it provides deep database optimization, end-to-end transaction view, isolation of problems and causes, scalable deployment, what-if analysis for changes, and history, trending, and planning.

[Start for Free](#)

